



June 2022

Keeping everyone up-to-date on the regeneration of your estate

This is our latest edition of the newsletter for the Benhill Estate Regeneration keeping everyone up-to-date on the plans. We hope you like the new design.

Jubilee Street Party

On Friday 3rd June Successful Sutton will be celebrating the Queen's Platinum Jubilee with a street party, we invite you to attend. The event will take place in two locations on Sutton high street, 'The Stage' (near Waterstones) and 'The Sound Lounge' (near Asda). There will be a variety of activities for the whole family to enjoy e.g. Live music, Children's craft make and take, Dance performances and refreshments.

To find out more please contact:

Patricia.park@successfultutton.co.uk



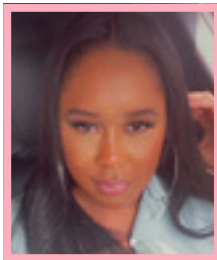
Throughout Sutton there will be 168 street parties to celebrate the Queen's Platinum Jubilee between 2nd-5th June, for more details please visit:

www.sutton.gov.uk/the-queens-jubilee

New members of the Housing Regeneration Benhill Team

Chelena Logan-Millanaise

"I joined Sutton Council in February and am pleased to be working with you on the future of your estate. I've had a warm welcome from all the residents I've met at the meetings and walkabouts. Through our conversations it's evident that Benhill is a great place to live and the Council wants to ensure that residents are at the heart of the regeneration proposals. I look forward to supporting you during this process and hearing your views as we move forward together."



Elisha Stewart

We welcome Elisha to the team. Elisha joined from another London borough last month and is keen to get to know Sutton residents. Elisha says:

"I am looking forward to getting to know everyone and working with you all to create a scheme that has a long lasting positive impact on the community. Please come and say hello when you see me around the estate or Sutton town centre".



What's happening next?

Estate Surveys

A number of technical surveys are required for the architects to undertake the exploration of options for the estate. They do not need to come into your homes. Do not hesitate to contact the Housing Regeneration Team if you require clarification. The following surveys are due to be carried out:

Topographical Survey:

Thursday 12th May 2022 for 2-3 weeks

Michael Gallie & Partners

Preliminary Ecological Survey:

Monday 30th May 2022

Ecology Co-Op

Transport and Parking Survey:

Wednesday 18th May 2022

Markides Associates

Structural Survey:

Date to be confirmed

Conisbee Associates

Tree Survey:

Anticipated June 2022

Tamla Trees Ltd

All surveyors and technical consultants visiting the estate for these surveys are required to carry ID at all times.

HTA ARCHITECTS

The Design Team



HTA Design Ltd was appointed for the Options Appraisal for Benhill Estate following an architect competition delivered in partnership with members of the Residents' Steering Group (RSG).

Benhill residents had the chance to meet HTA at the drop-in sessions in February and the April RSG meeting. Paul from HTA Design explained...

“We want to understand people’s aspirations and wishes over the course of the year. Designs and options will be centred around people’s lives, their homes, the buildings and the environment”.

Paul, Jamie, Caroline and the HTA team say:

HTA are delighted to be working with you, the residents of Benhill Estate, to collaborate in co-designing a future regeneration vision. We met some of you at the recent RSG meeting on Thursday 21st April, and look forward to meeting many more of you soon as we carry out some interactive Options Appraisal workshops over the summer months. Shaping regeneration options for your estate depends on as many residents joining in the Options Appraisal workshops as possible – bring the kids and please tell your neighbours!

On Saturday 7th May we held the Regeneration Estate Walkabout. Thanks to all those residents that attended as it was a great opportunity to discuss what people ‘like’ and ‘dislike’ about their estate. If anyone has further feedback or photos to share please do get in touch. (Contact details at the end of the newsletter).

Finally, please do take a few minutes to tell us what your long-term objectives are, in terms of regeneration for Benhill Estate on the Objectives Questionnaire form available to download. This can be found on the Sutton Council website, please search ‘**Benhill Regeneration**’, then click on our ‘**Resident Consultation**’ page.

Once you have completed this please send to:
estateregeneration@sutton.gov.uk

Please complete this by Thursday 30 June 2022, your feedback will help steer the emerging options over the summer months. Hope to see you soon!



Workshop Date for Your Diary!

Saturday 23rd July 2022
from 11am to 2pm

Outside at the Clevedon House undercroft

Regeneration Options Workshop One - Shaping your neighbourhood options

Bring friends and family along to the first co-design workshop. We’ll be running options workshops with you to explore a range of design ideas from refurbishment to redevelopment. Please come along to ask questions and have your say, and also enjoy some of the fun and interactive events for all the family.

The Local Election results for the Sutton Central Ward:

The Council's local elections were held on Thursday 5th May, thank you to everyone who took the time to vote. We can announce that the following candidates were successfully elected for Sutton Central:

Councillors David Dario Bartolucci, Cryss Mennaceur and Edward John Parsley

I’m sure you’ll join us in congratulating your ward Councillors and we look forward to working with them in the future.

Communities First - The independent residents' adviser

Over the next few months everyone will have the chance to learn more about the options for the estate. The options appraisal will be an opportunity to decide the future of Benhill for decades to come.

Questions we are often asked as the residents' independent adviser include:

Q: Why is Sutton looking at different options for the Benhill estate?

A: It's common for social landlords to consider the future of estates that are 50-60 years old. Ageing buildings often need a lot of repairs and improvements to bring them up to modern standards, and Sutton will need to know how practical (and how expensive) this will be on Benhill. The borough also needs more social housing to house the hundreds of families on the waiting list, so any potential to add extra homes to existing estates is worth exploring.

Q: My home has large rooms. Can replacement homes match these?

A: In recent years the Greater London Authority has increased the floorspace it requires in new social homes, and the minimum space standards in its Design Guide are similar to the "Parker Morris" space standards used by councils in the 1960s and 1970s. The architects will draw up plans for any new homes, so they need to know what you would want to see in any new homes.

Communities First is the independent residents' adviser. Please call us on Freephone **020 8682 9570**, email **benhill@communitiesfirst.uk.com** or visit **www.communitiesfirst.uk.com/projects/benhill-estate**

We can chat to you over the phone and can also arrange to visit you at home or meet locally at a time of your convenience.

Resident's Steering Group (RSG)

Join the Residents' Steering Group to stay informed, get involved and to represent your views. We look forward to hearing from you. Freephone **020 8682 9570** or **benhill@communitiesfirst.uk.com** or any at any of the contact details below.

If you have a question about the regeneration programme, or would like to share your views and get more involved, please let us know. If you'd like something in this newsletter explained, or require it in large print or braille, please call us on: **020 8770 5689**

Sutton Housing Regeneration Updates - New Homes for Local People

In March 2022, residents of Elm Grove voted 'Yes' to regeneration in what was Sutton's first estate regeneration ballot. 78.6% of residents supported plans for a new neighbourhood with modern homes and improved amenities for current and future residents to enjoy.

Planning permission was also granted to build 92 high quality sustainable new homes at Beech Tree Place. Phase 1 construction works are due to start in September. The proposal will provide new homes that meet the needs of current residents and will also provide housing for Sutton's wider community.

Please contact us (details at the bottom of the page) if you would like to know more or contact the housing regeneration team.

Benhill Residents' Charter and Community Charter

Please work with us to co-produce a Residents' Charter for Benhill. The Residents' Charter will set out Sutton's offer and commitments in the event that regeneration happens. The Community Charter will reflect your priorities for your homes and estate environment. Discussions will be held through small group sessions and one-to-one meetings and will inform proposals for the future of Benhill. We want to hear from as many residents as possible.

Women's Safety - The Walk and Talk Initiative

The Walk and Talk initiative is led by the Metropolitan Police and offers visits to areas where women may not feel safe going to by themselves. The initiative helps to identify the issues and makes recommendations to improve the safety of our communities. If you'd like to learn more about how this initiative could support you, please contact:

SNMailboxWalk&Talk@met.police.uk

