

# Elm Grove Community Plan Second Consultation Session

## Summary Report

<b>Event title:</b>	<b>Resident/stakeholder consultation</b>
<b>Event date:</b>	<b>29 th June , 2017</b>
<b>No. of attendees:</b>	<b>17</b>
<b>Location:</b>	<b>Elm Grove ,Sutton</b>
<b>Levitt Bernstein Architects:</b>	<b>Vinita Dhume , Patricia Calvino</b>
<b>London Borough of Sutton:</b>	<b>Katie Wren, Dean James, Simon Pickles, Andy Webber, Frances Toomey</b>
<b>Sutton Housing Partnership</b>	<b>Lorraine Krishnan</b>

This report summarizes the feedback provided following the second Elm Grove Consultation session . The workshop was a public event held at Elm Grove. The feedback collected from this interactive community workshop session has been summarized here below.

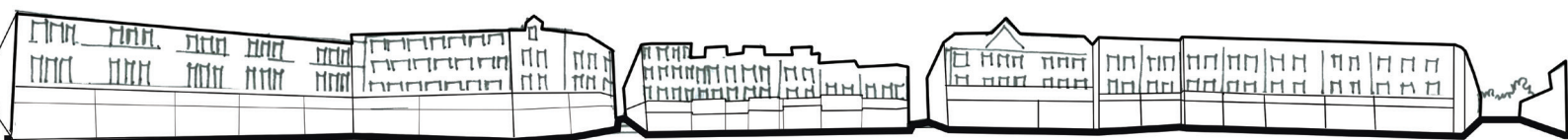
How could we improve your neighbourhood ?

### Summary of responses:

- The residents felt that there could be plenty of opportunities for Elm Grove to improve as a neighbourhood. Some of the suggestions included introducing a water feature and community rooms, hiding or clearing the rubbish and solving parking issues in the area.
- The residents appreciated the idea of creating safe and secure public spaces but stressed on the importance of having more play spaces for children that are well-overlooked. They also highlighted the importance of better management of such spaces.
- The residents expressed a few concerns about a mixed neighbourhood attracting anti-social elements , however they also had a lot of ideas on how a mixed neighbourhood could function successfully in the future.
- The residents didn't mind having taller buildings along Throwley Way as long as they were sensitively designed . They described how they envision the flats, the balconies and parking for the blocks along Throwley Way.



Levitt Bernstein



# Feedback from Elm Grove residents and stakeholders

## Opportunities for Elm Grove

### Comments

- “I think anything that helps hide the bins will be an improvement.”
- “We should have a community room since it will help encourage shared activities in the area.”
- “Do make sure there are lots of affordable homes.”
- “I’m afraid activities close to Elm Grove could make it noisy.”
- “Can we have a water feature like the one at Sainsbury’s?”
- “If I moved to temporary accommodation and came back who pays for T.A rent?”
- “Maybe you can negotiate some kind of agreement that allows us to use parking spaces at ASDA.”
- “We need more visitor parking spaces.”
- “I think it’s important to focus on the security of courtyards.”

## Safe and active open spaces

### Comments

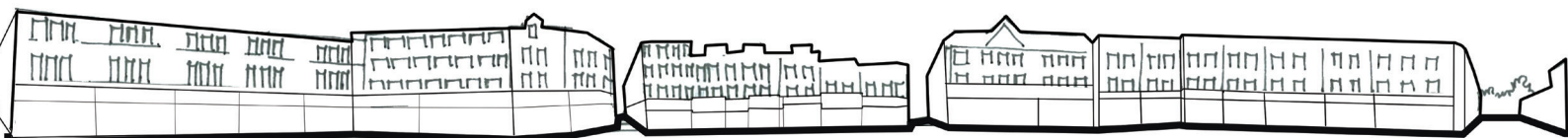
- “I like the idea of safe and secure public spaces, preferably with good quality paving.”
- “We need more safe play spaces that are well overlooked for children.”
- “We would like a garden for our home and we wouldn’t like it to be overlooked.”
- “I don’t like any of the examples shown.”
- “We will need better management for these spaces.”

## A mixed neighbourhood

### Comments

- “I think we should keep Elm Grove residential.”
- “We need more homes for the disabled.”
- “Maybe the internal layout of the houses could be better, have living spaces opening out to gardens.”
- “A balcony on the garage.”
- “I’m afraid a mixed neighbourhood could attract anti-social behavior.”
- “I prefer having seating with a back rest in shared spaces.”
- “We need cycle parking for the flats.”

Levitt Bernstein



# Feedback from Elm Grove residents and stakeholders

## Throwley Way

### Comments

- “The parking here blocks the owners parking bay.”
- “I think using a lighter shade of brick would be better.”
- “I prefer internal balconies along Throwley Way.”
- “I’d like to see two bed apartments but that may change .”
- “The middle block looks ugly and unfinished.”
- “I actually like the taller buildings along Throwley Way.”
- “I want to be able to park outside my door.”
- “The windows in my home are not airtight, I’d like the new homes to be efficient.”
- “I’d rather you build sensitively than go too high along Throwley way.”
- “The smaller flats are overcrowded, we need flats of different sizes to accommodate our needs.”
- “We need more storage space in our homes.”
- “I want balconies that have some amount of privacy from Throwley Way.”
- “I would prefer living on the first floor.”
- “We would like courtyards.”
- “The kitchen area could have a small sit-in space table to sit down.”

Levitt Bernstein

