

Elm Grove Community Plan Fifth Consultation Session

Summary Report

Event title:	Resident/stakeholders consultation – Resident offer and internal layouts
Event date:	28th November 2017
No. of attendees:	17 attendees
Location:	Salvation Army Church, Sutton
Levitt Bernstein Architects:	Patricia Calvino, Ruth Richardson and Vinita Dhume
London Borough of Sutton:	Katie Wren, Simon Pickles, Alison Boote, Simon Latham and Councillor Marlene Heron.

This report summaries the feedback provided following the fifth Elm Grove Consultation session . The workshop was a public event held at the Salvation Army Church in Sutton. The feedback collected from this interactive community workshop session has been summarised here below.

Summary of the session:

Workshop 5 gave details about the draft of the resident offer and presented different flat and maisonette typologies that could be built on Elm Grove.

Residents had the opportunity to discuss the resident offer with the Council.

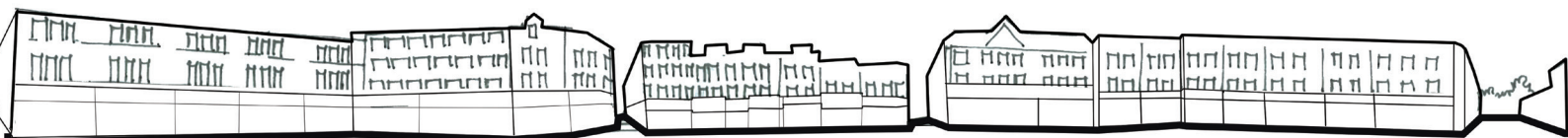
We also talked about the internal layouts and used models and example images to illustrate what the new homes may be like. We discussed what residents liked and disliked about the typologies, and what their living preferences may be.

Information on the three options presented at workshop 3 was also available and residents were able to offer further comments on these options, prior to the development of a preferred option.

How could we improve your neighbourhood ?



Levitt Bernstein



Feedback from Elm Grove residents and stakeholders

Existing 1 bedroom 2 person flat

Comments

- “This room is too small for a bedroom but does not have shelves etc for storage”
- “More storage will be great”

Existing 2 bedroom 3 person flat

Comments

- “No storage on existing units. We only have a utilities room. Due to gas connections we can't use that room”

Existing 3 bedroom 4 person 2 storey house

Comments

- “More storage would be better”
- “1 of the bedrooms is too small”
- “Love the location of my house I want to be in the town centre”
- “I would like a larger lounge. Lounge is very small”

An example: 1 bedroom 2 person flat

Comments

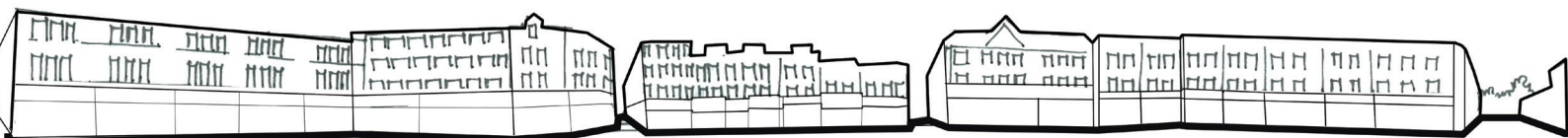
- “Prefer separate kitchen”
- “Disabled friendly bathroom please!”
- “I prefer not to be at ground floor”

An example: 2 bedroom 4 person flat

Comments

- “Currently ground floor flat – would like 1st floor if there is a lift”
- “Spacious and better layout to flat”
- “You're taking away 1 room by making it open plan”
- “I prefer no open kitchen”
- “I prefer a close kitchen and an extra toilet with a shower”

Levitt Bernstein



Feedback from Elm Grove residents and stakeholders

An example 3 bedroom 5 person flat

Comments

- “Prefer 2B – 4P flat as second bedroom is bigger”
- “Need a bigger bedroom – the main master bedroom especially!”
- “I don’t like long corridors”
- “Balcony good”

An example 3 bedroom 5 person maisonette

Comments

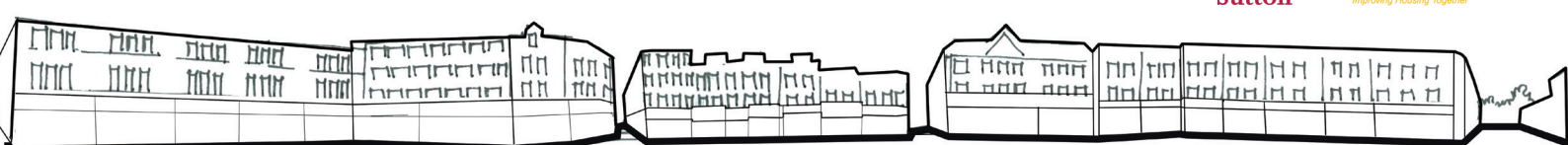
- “Extra toilet very good. Increased area very good”
- “Good to have a new house but sad that things will change and there wont houses”
- “Big maisonette – great!”
- “2 bed maisonette would be great!”
- “Separate dining and living”
- “3B – 6 person house/maisonette needed for children of various ages and different sexes”
- “3B 6p maisonette would be better”
- “Concerns about living room at front of house”
- “Concerns about neighbour above“
- “Separate kitchen dinner to lounge”
- “Storage really important”
- “Would be good to see images of these built or visit some”
- “Would prefer to enter into a hallway than living room”

Precedents - Interiors: Kitchens, dining and lounge areas

Comments

- “I like the lights”
- “Prefer balcony out of living room”
- “Prefer light-coloured fittings”

Levitt Bernstein



Feedback from Elm Grove residents and stakeholders

Precedents - Interiors: Bedrooms and bathrooms

Comments

- "I like the lights"
- "Prefer balcony out of living room"
- Prefer light coloured fittings

Precedents - Interiors: Storage and circulation areas

Comments

- "Storage is good love houses with lots of storage"
- "Lots of storage is good"
- "Love more storage"
- "The material is too dark"

Precedents - Entrances

Comments

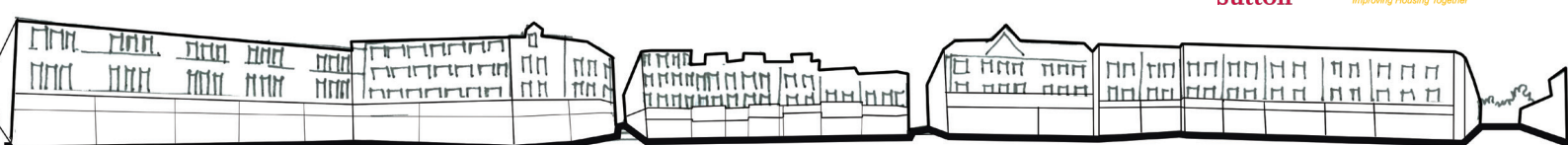
- "Storage is good love houses with lots of storage"
- "Lots of storage is good"
- "Love more storage"
- "The material is too dark"

Precedents - Entrances

Comments

- "I'd like to have a parking space"
- "Like a good front garden"
- "Post boxes near the entrance is a good idea. As long as they are secure and locked"
- "We need more lighting in the street and access to flats"
- "I prefer not to have a glass door"

Levitt Bernstein



Feedback from Elm Grove residents and stakeholders

Precedents - Communal areas and access decks

Comments

- “Door step play good”
- “Internal corridors preferred”
- “I don’t like the colour”

Precedents - Balconies

Comments

- “Prefer enclosed balcony“
- “I like square balconies to put a table and chairs”
- “Balconies facing onto Throwley Way is a problem. Could they be protected along that way?”
- “Inset balconies look nicer and safer”
- “I like the balconies. Inset balconies give more privacy”
- “Balconies and back gardens for ground floor homes would be great. Love those ideas”
- “Prefer the light brick”
- “I prefer inset balconies “
- “Prefer balconies on inside (not Throwley Way)”

Option 2

Comments

- “Parking. Bigger Courtyard. Closed balconies“

Option 3

Comments

- “I like the new Elm Grove alignment”
- “I like the new alignment of Elm Grove”

Levitt Bernstein

