

Elm Grove Community Plan Fourth Consultation Session

Summary Report

Event title:	Resident/stakeholders consultation – Public Space
Event date:	24th October 2017
No. of attendees:	8 attendees
Location:	Salvation Army Church, Sutton
Levitt Bernstein Architects:	Patricia Calvino, Ruth Richardson
London Borough of Sutton:	Katie Wren, Simon Pickles, Alison Boote, Councillor Marlene Heron and Cllr. David Bartolucci

This report summarizes the feedback provided following the fourth Elm Grove Consultation session. The workshop was a public event held at the Salvation Army Church in Sutton. The feedback collected from this interactive community workshop session has been summarized here below.

Summary of the session:

Workshop 4 was about understanding the residents needs and preferences about public space in Elm Grove.

We discussed about the potential new character of Elm Grove, Throwley Way and the east-west alleyways. All, becoming more pedestrian friendly streets.

We talked about the different ways of including parking in the new development. We discussed about having parking in the courtyards, a podium parking or on-street parking.

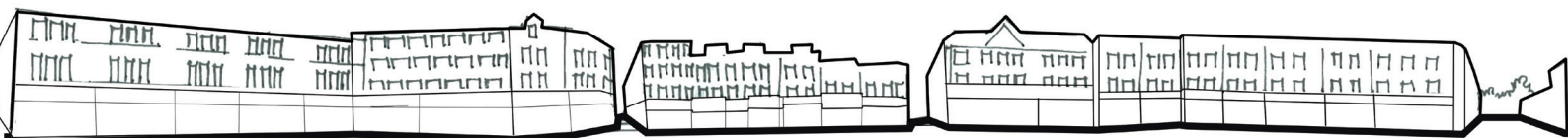
There was also a discussion about communal and private amenity spaces. We asked the residents what they like and dislike about the communal courtyards.

We also presented different ways to provide with private amenity space, such as, front gardens, back gardens and balconies.

How could we
improve your
neighbourhood ?



Levitt Bernstein



Feedback from Elm Grove residents and stakeholders

Frame Elm Grove

- “I like trees, and some seating area to rest during a walk.”
- “I like some on street parking along Elm Grove.”
- “I like seating areas. I don't like too big front gardens.”
- “Cars should be only on the courtyards.”
- “Don't like big trees in front of my house.”
- “No fruit trees.”
- “Parking places for maintenance who work on the properties are needed.”
- “I like on street parking.”

Throwley Way

Comments

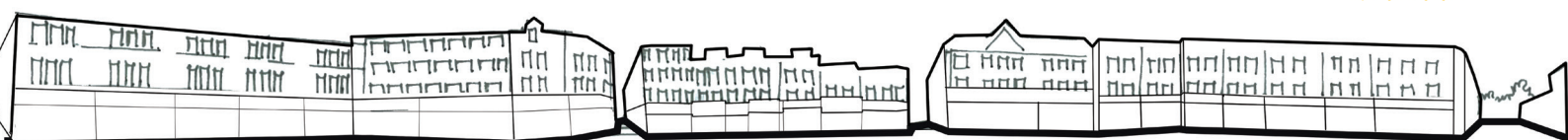
- “I like front gardens along Throwley Way”
- “I like trees along Trowley Way. I like balconies along Throwley Way for people to relax.”
- “There are not a lot of cyclist, but a well designated cycle lane would be good.”
- “I like front gardens along Throwley Way.”
- “The cycle lane would make the road too narrow”
- “Tram would be noisy.”
- “I would like a wide and nice footpath.”

Alleyways

Comments

- “I would like to have play areas in the alleyways. The play facilities are a long way from Elm Grove.”
- “Keep the shops' service vehicles away from the estate.”
- “I think is not safe to have amenity space onto the street.”
- “I like green front garden, but not very big.”

Levitt Bernstein



Feedback from Elm Grove residents and stakeholders

Courtyards

- “I prefer cars at ground level on an outdoor space and overlooked.”
- “Parking on the courtyard are good, your car is close to your home.”
- “Would prefer the courtyards to be enclosed only for residents.”
- “Kids shall have space to play.”
- “I like parking on the courtyards. I don't like open plan flats!”
- “I'd like to have trees, play areas and seating areas.”
- “I'd like to have more privacy to my back garden, not hear noise, higher fences.”
- “Create two different types of courtyards, one more quiet other more for kids.”
- “I like courtyards to avoid pollution from the street.”
- “I like balconies towards the courtyards.”

Podium parking

- “May still encourage people to congregate – no podiums...” (red circular sticker on post-it)
- “I prefer the podium.”
- “Prefer podium.”
- “Would like to have fob access.”
- “I like to have the cars under the courtyard.”

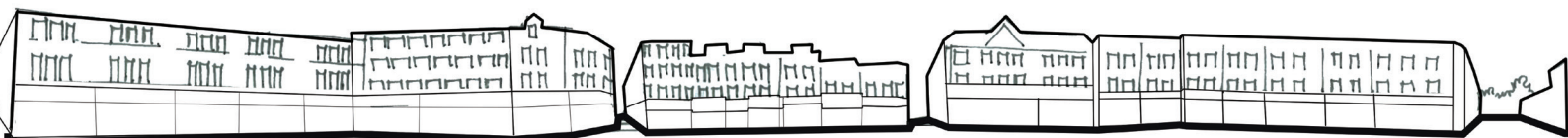
On street

- “I don't like on street parking.”

Parking courtyard

- “The option with more cars.”

Levitt Bernstein



Feedback from Elm Grove residents and stakeholders

Front gardens

- “I like a small and green garden. With small storage for bins.”

Back gardens

- “I can’t take care of a big back garden.”
- “I like high fences to have privacy.”

Private amenities, balconies

- “Balconies won’t be private if they face the street.”
- “I prefer recessed balconies, big balconies with space to sit.”
- “Like plainer Bricks – no bright colours.”
- “I prefer projected balconies to get more light.”

Future sessions

- “I’d like to attend a site visit if available.”
- “Yes if it involves houses.”
- “2 individuals potentially”
- “I’d be interested in a site visit.”

Levitt Bernstein

