

# London Borough of Sutton – Structure Chart November 2024



**Helen Bailey**  
**Chief Executive**  
 Responsible for implementing the decisions of the council ensuring all functions, duties and powers are properly exercised and overseeing the efficient planning of the council's services. The Chief Executive is also the Electoral Registration and Returning Officer.



**Martha Matheou**  
**Head of Electoral Services**  
 Responsible for electoral registration, electoral administration and the delivery of all electoral functions.



**Imran Choudhury**  
**Strategic Director of Public Health and Wellbeing**



Public Health  
 Substance misuse, sexual health and family planning, health visiting, school nursing and family nurse partnership and health lifestyles, Health protection, Quality Assurance  
 Health Service Commissioning  
 Libraries, Culture and Leisure, health and social care integration. Transport for older people, meals on wheels, Sutton College, the Social Inclusion Centre and the Life Centre, Accountability for VCS

**Richard Simpson**  
**Strategic Director of Resources**



Finance (statutory CFO)  
 HR and OD  
 Digital and ICT  
 Asset Planning, Management and and Capital Delivery  
 Business Services  
 Customers, Transformation and Strategy  
 Law and Governance -  
 Monitoring Office

**Spencer Palmer**  
**Strategic Director of Environment, Housing and Neighbourhoods**



Housing, Planning and Licensing  
 Highways, Transport and Regulatory Services  
 Building control  
 Environmental and Waste Management, Street Cleaning and Parking Services  
 Sutton Housing Partnership, SDEN, Sutton Living and Encompass  
 Leadership of the Climate  
 Emergency response

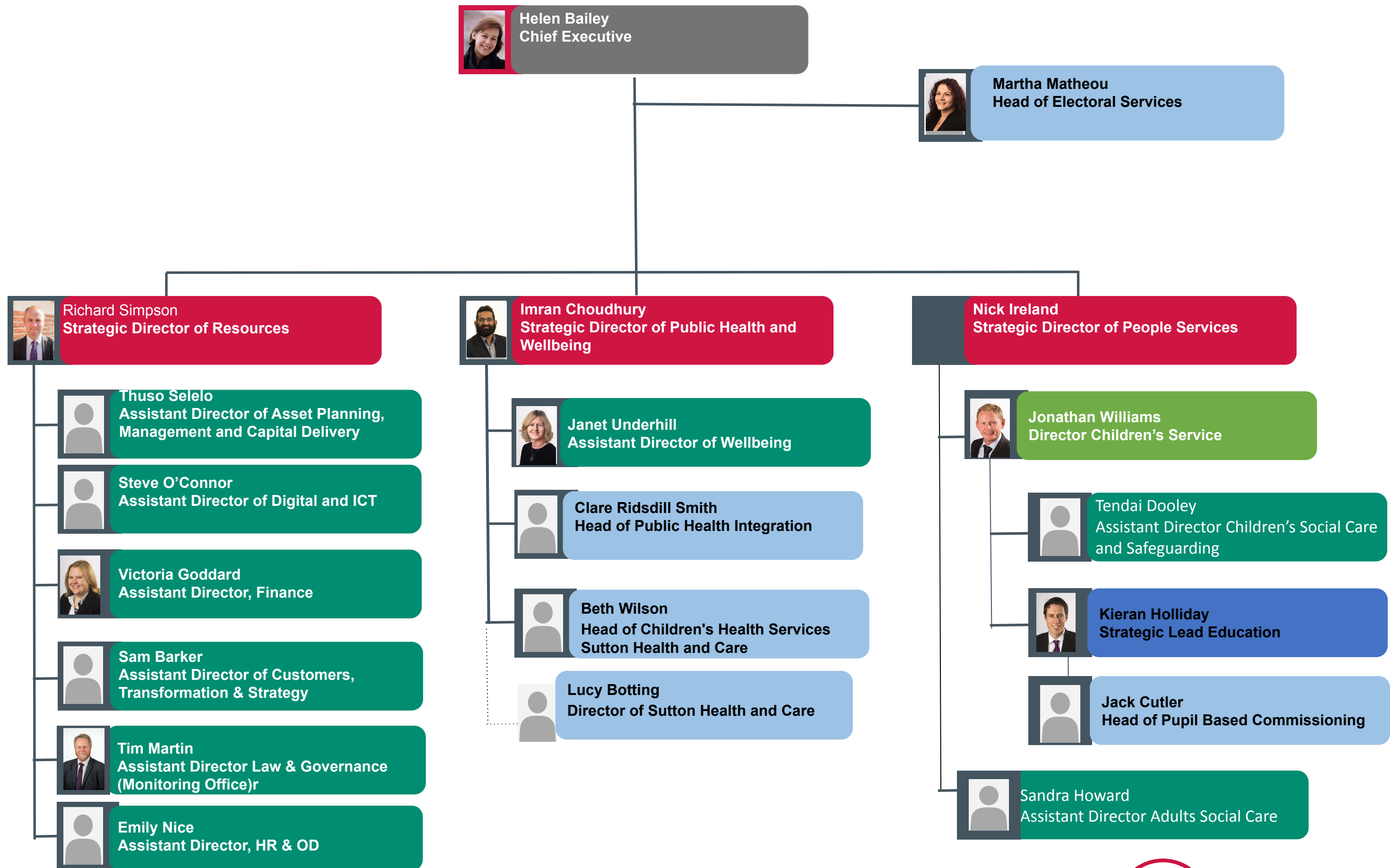
**Nick Ireland**  
**Strategic Director of People Services**

Adults Social Care  
 Children's Social Care  
 Education and Special Needs  
 Safeguarding  
 Pupil based commissioning  
 Cognus  
 Accountability for Safeguarding

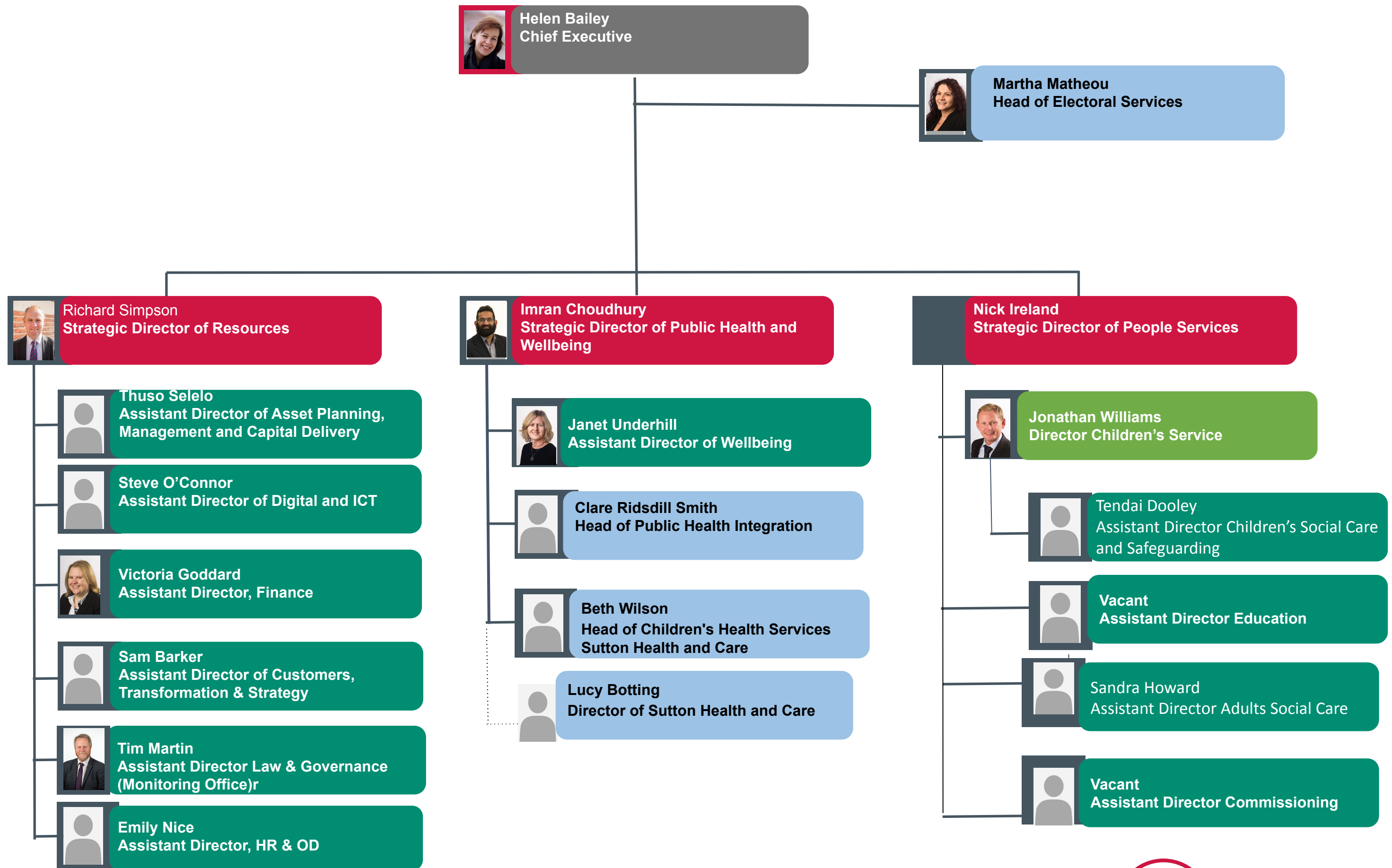
**Ambitious for Sutton - Having the Right Capacity to Deliver**




# London Borough of Sutton – Organisational November 2024 (1 of 2)



# London Borough of Sutton – Organisational November 2024 (1 of 2)



# London Borough of Sutton – Organisational November 2024 (2 of 2)




**Helen Bailey**  
Chief Executive




**Spencer Palmer** Strategic Director  
Environment, Housing and  
Neighbourhoods




Assistant Director Housing



**Sarah Rye**  
Assistant Director of Highways,  
Transport, and Regulatory Services



**Jennifer Sibley**  
Assistant Director of Environment and  
Planning

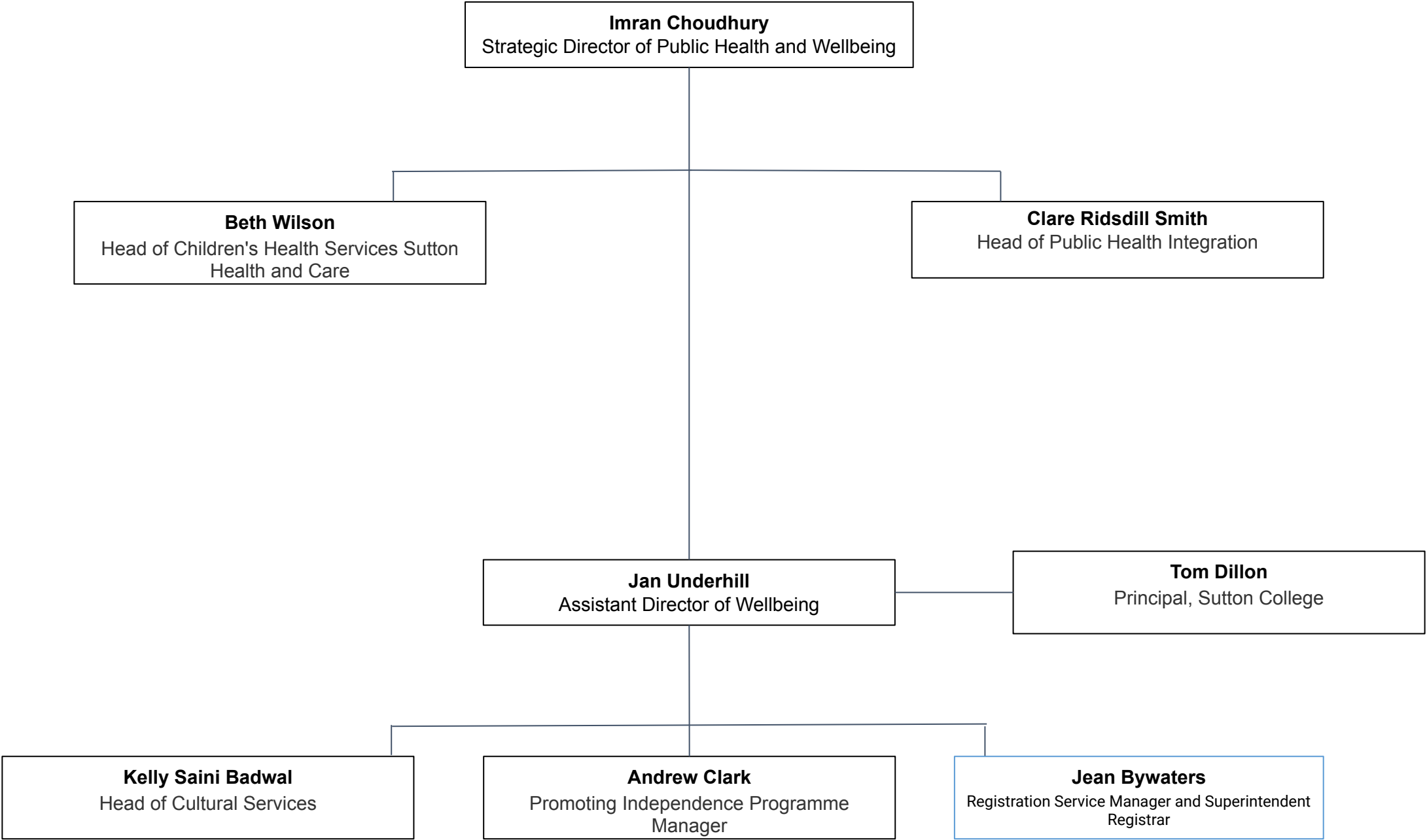


**Adam Tucker**  
Head of Housing Enabling and  
Development

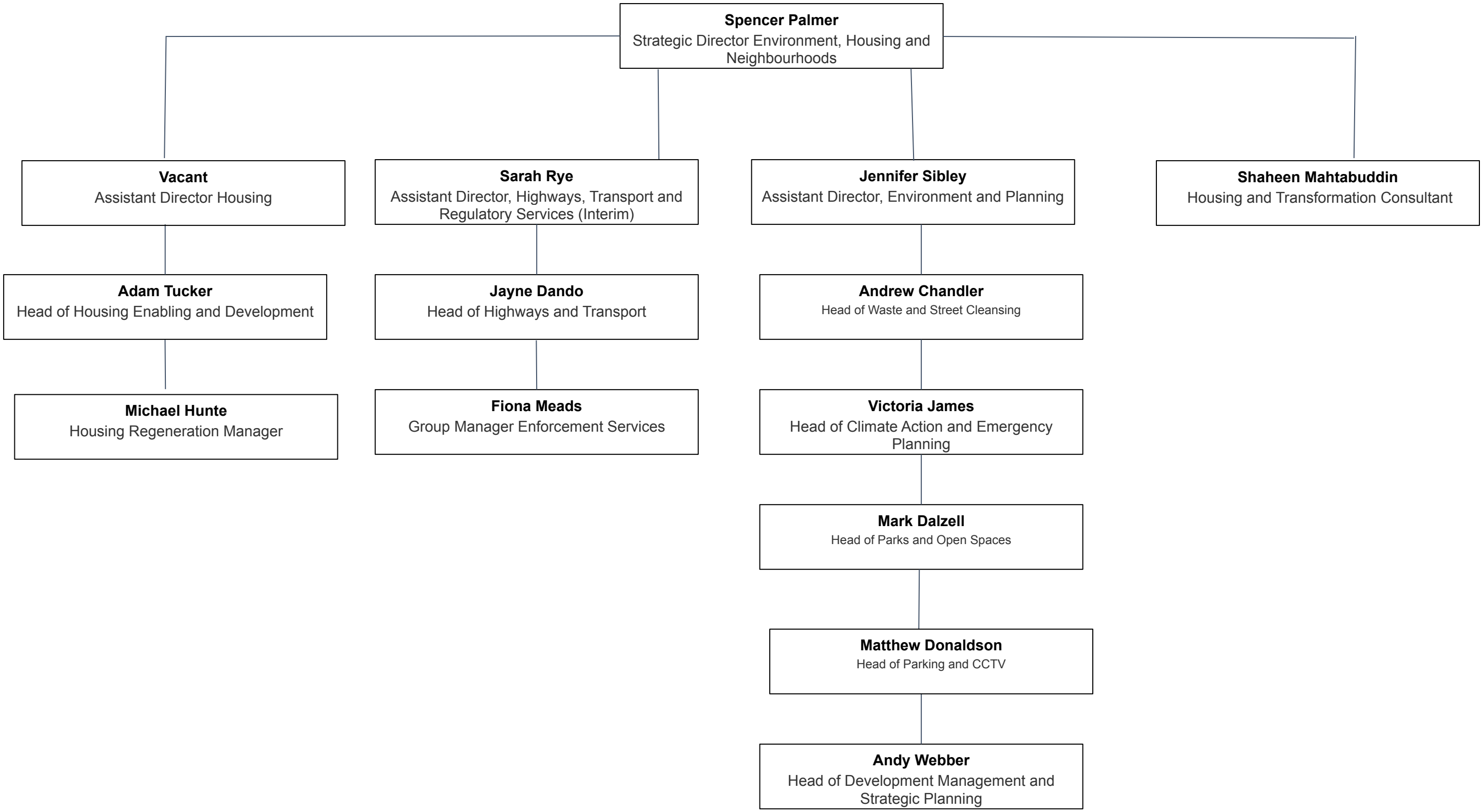


**Andrew Webber**  
Head of Development Management and  
Strategic Planning

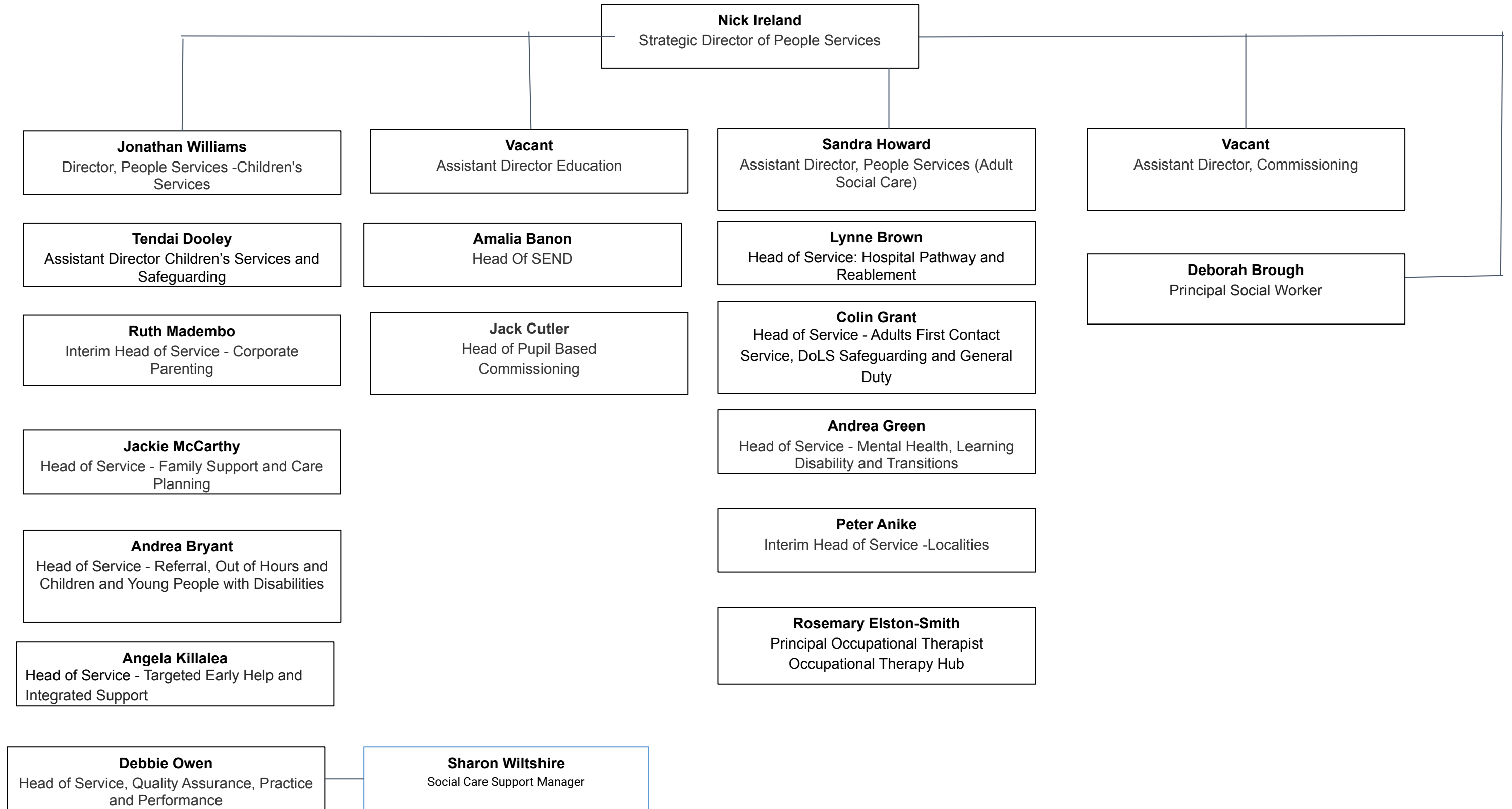
# Public Health and Wellbeing



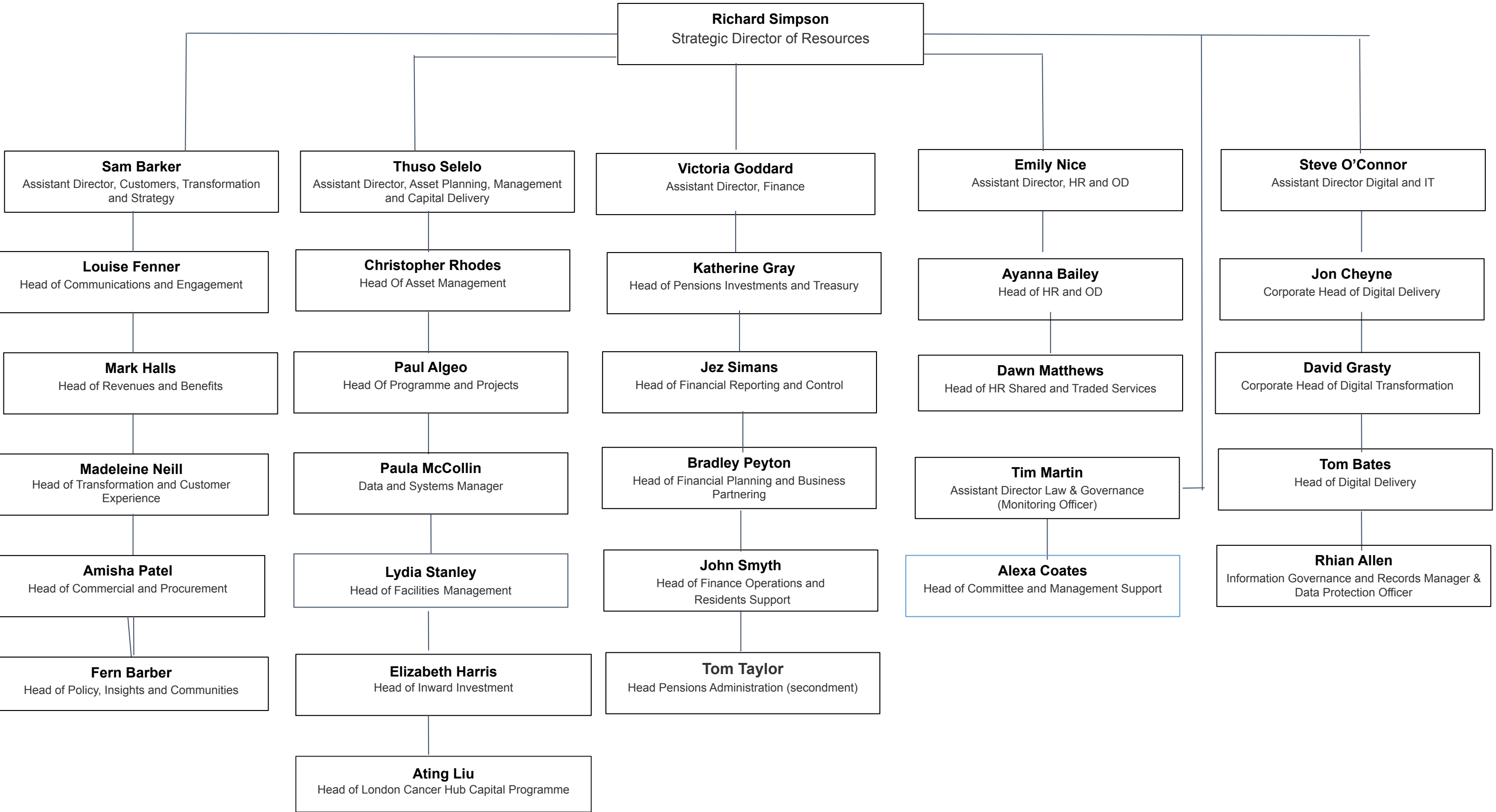
# ENVIRONMENT, HOUSING and NEIGHBOURHOODS



# PEOPLE SERVICES DIRECTORATE



# RESOURCES DIRECTORATE





**Helen Bailey - Chief Executive** - [helen.bailey@sutton.gov.uk](mailto:helen.bailey@sutton.gov.uk)

**Imran Choudhury - Strategic Director of Public Health and Wellbeing** - [imran.choudhury@sutton.gov.uk](mailto:imran.choudhury@sutton.gov.uk)

Jan Underhill - Assistant Director of Wellbeing - [jan.underhill@sutton.gov.uk](mailto:jan.underhill@sutton.gov.uk)

Clare Ridsdill Smith - Head of Public Health Integration - [clare.ridsdill-smith@sutton.gov.uk](mailto:clare.ridsdill-smith@sutton.gov.uk)

Beth Wilson - Head of Children's Health Services Sutton Health and Care - [beth.wilson@sutton.gov.uk](mailto:beth.wilson@sutton.gov.uk)

Lucy Botting - Director of Sutton Health and Care - [l.botting@nhs.net](mailto:l.botting@nhs.net)

**Richard Simpson - Strategic Director of Resources** - [richard.simpson@sutton.gov.uk](mailto:richard.simpson@sutton.gov.uk)

Thuso Selelo - Assistant Director of Asset Planning, Management and Capital Delivery - [thuso.selelo@sutton.gov.uk](mailto:thuso.selelo@sutton.gov.uk)

Steve O'Connor - Assistant Director of Digital and ICT - [steve.oconnor@kingston.gov.uk](mailto:steve.oconnor@kingston.gov.uk)

Victoria Goddard - Assistant Director of Finance - [victoria.goddard@sutton.gov.uk](mailto:victoria.goddard@sutton.gov.uk)

Sam Barker - Assistant Director of Customers, Transformation and Strategy - [sam.barker@sutton.gov.uk](mailto:sam.barker@sutton.gov.uk)

Tim Martin - Assistant Director Law & Governance (Monitoring Officer) - [tim.martin@sutton.gov.uk](mailto:tim.martin@sutton.gov.uk)

Emily Nice - Assistant Director of HR and OD - [emily.nice@sutton.gov.uk](mailto:emily.nice@sutton.gov.uk)

**Spencer Palmer - Strategic Director of Environment, Housing and Regeneration** - [spencer.palmer@sutton.gov.uk](mailto:spencer.palmer@sutton.gov.uk)

Sarah Rye - Assistant Director of Highways, Transport, and Regulatory Services - [sarah.rye@kingston.gov.uk](mailto:sarah.rye@kingston.gov.uk)

Victoria James- Interim Assistant Director, Environment and Planning [jennifer.sibley@sutton.gov.uk](mailto:jennifer.sibley@sutton.gov.uk)

Andy Webber - Head of Development Management and Strategic Planning - [andy.webber@sutton.gov.uk](mailto:andy.webber@sutton.gov.uk)

Adam Tucker - Head of Housing Enabling and Development

Katrina Lloyd-Interim Head of Climate Action and Sustainability - [victoria.jeffery@sutton.gov.uk](mailto:victoria.jeffery@sutton.gov.uk)

**Nick Ireland- Strategic Director of People Services** - [nick.ireland@sutton.gov.uk](mailto:nick.ireland@sutton.gov.uk)

Jonathan Williams -Director Children's Services- [jonathan.williams@sutton.gov.uk](mailto:jonathan.williams@sutton.gov.uk)

Tendai Dooley - Assistant Director Children's Services and Safeguarding - [tendai.dooley@sutton.gov.uk](mailto:tendai.dooley@sutton.gov.uk)

Sandra Howard- Assistant Director Adult Social Care - [sandra.howard@sutton.gov.uk](mailto:sandra.howard@sutton.gov.uk)

Kieran Holliday - Strategic Lead Education- [kieran.holliday@sutton.gov.uk](mailto:kieran.holliday@sutton.gov.uk)

Jack Cutler - Head of Pupil Based Commissioning - [jack.cutler@sutton.gov.uk](mailto:jack.cutler@sutton.gov.uk)

**Martha Matheou - Head of Electoral Services** - [martha.matheou@sutton.gov.uk](mailto:martha.matheou@sutton.gov.uk)